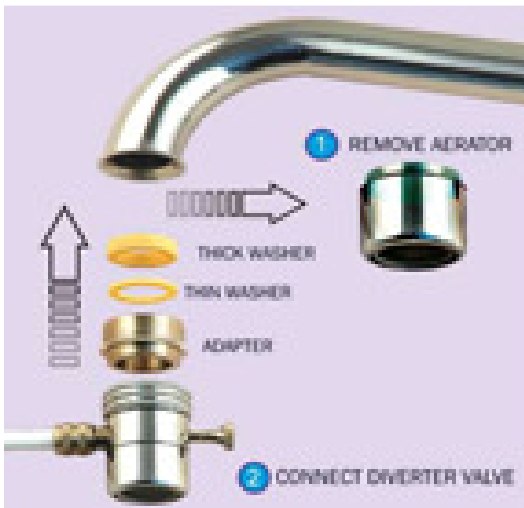




FITTING INSTRUCTIONS FOR PURESTREAM COUNTER TOP WATER FILTERS.

This filter will normally be connected to a kitchen or bathroom faucet. Where the faucet incorporates an aerator fitting proceed as follows:

1. Remove aerator fitting.
2. If faucet spout has a male thread, the diverter valve supplied should screw straight on.
3. If arm has a female thread, or 'flick mixer' type thread, a special male to male adaptor is included which screws up inside the end of the faucet to provide a male thread to attach the diverter.



Where no aerator is available or the size of the thread is non-standard, a collar is available which clamps around the end of the faucet to provide a thread. Please contact Purestream for details.

An alternative is to change the faucet for one that has the aerator. Available from Bunnings