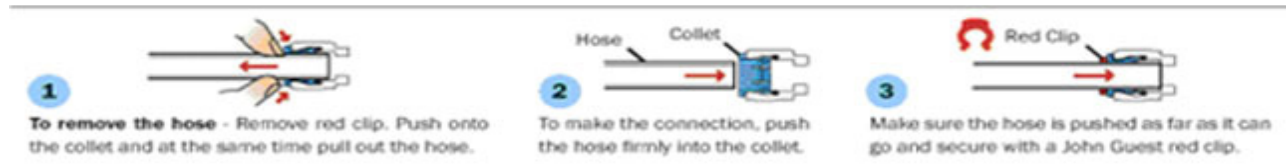
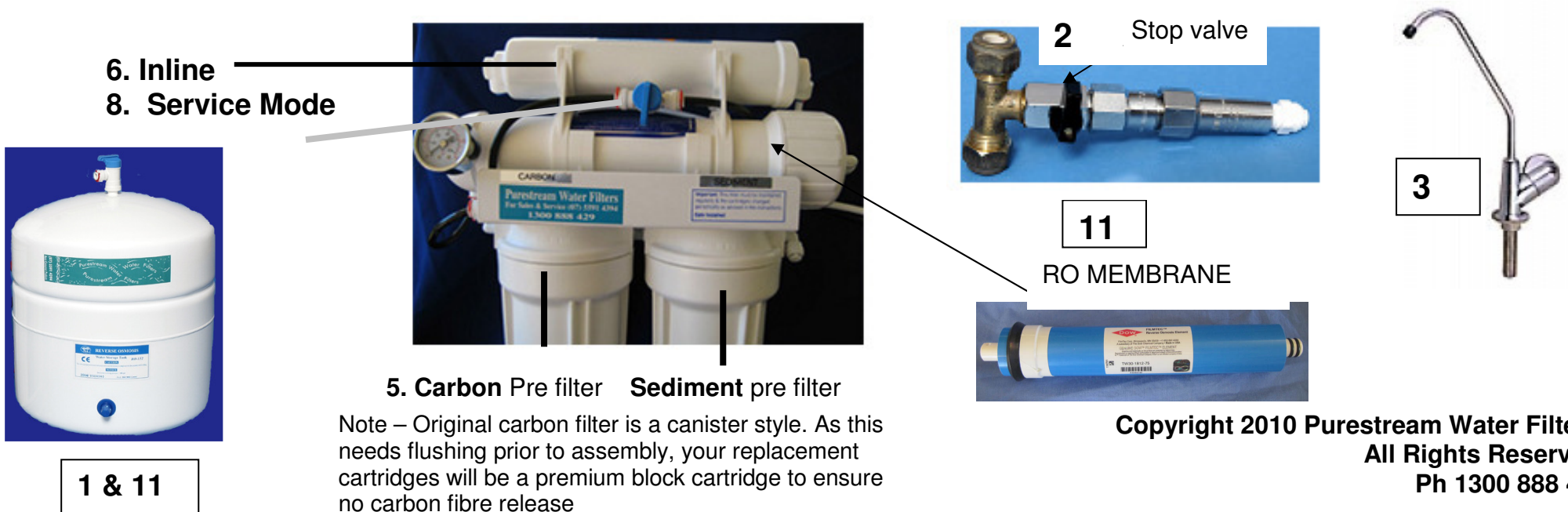


## REVERSE OSMOSIS UNDERSINK CARTRIDGE REPLACEMENT – EVERY 12 MONTHS.

1. Close stop valve on top of tank – right angles to line.
2. Turn off water supply at stop valve -
3. Faucet should still be open to remove any airlock. Cartridge housings will not open if faucet is closed.
4. Undo cartridge housings using spanner –right to left.
5. Remove old cartridges, sediment and chlorine removal, and clean housings with hot soapy water, rinsing thoroughly. Install new cartridges, plain white (sediment) first point of contact with water.
6. Disconnect, discard and replace inline housing on top of membrane, ensuring tubing is fully pushed in fitting, If your new inline has small lengths of white tubing in end, this is to keep cartridges sterile until use. Simply push blue sleeve back on itself and pull out white tube.
7. Turn water on at stop valve checking for leaks.



8. SERVICE MODE - Turn service mode on to flush new cartridges 1 – 2 minutes.
9. With faucet open wait until water starts dripping from faucet confirming the unit is working correctly.
10. Turn off faucet and open stop valve on top of tank – stop valve should be in line with tubing.
11. Reverse Osmosis membrane is due every 4 years. We recommend you sterilise your storage tank at same time. Check Maintenance Instructions



Note – Original carbon filter is a canister style. As this needs flushing prior to assembly, your replacement cartridges will be a premium block cartridge to ensure no carbon fibre release