



INSTALLATION & SERVICE GUIDE 4 STAGE COUNTERTOP REVERSE OSMOSIS WITH SERVICE MODE

Applies to units with Mineralising and/or Alkalisng Cartridge as final filter

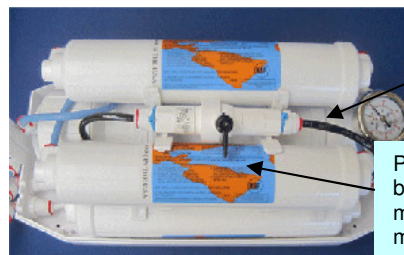
Congratulations on your purchase of the most advanced Reverse Osmosis Water Purification system available. Part of our commitment to your continued supply of the purest drinking water available is we do the remembering for you when to replace your cartridges.

Our Cartridge Reminder Service, either by email or telephone will provide you with the very best cartridges at our specially discounted wholesale prices.

To ensure correct operation of your Reverse Osmosis unit, water supply must be within the following specifications

MODELS WITH PA (TFC) MEMBRANES

ph Range	4 – 11
Iron Level (Max.)	1.00 ppm
Total Dissolved Solids (max)	2000 ppm
Chlorine Level (Max)	2.0 ppm
Water Temperature (max)	40 degrees Celsius
** Water Pressure (Max)	100 psi
** Water Pressure (Min)	40 psi (400 kPa)



Membrane in housing with Pressure Gauge

Post Filter can be replaced with mineralising and/or mineralising/oxygenating cartridge

35cms. L x 16cms H x 16cms. W

While your Purestream Reverse Osmosis Purifier can be considered portable, it will normally be installed on your kitchen bench and attached to your faucet by means of a chrome diverter valve. To divert water to your unit, simply turn water on and turn the silver lever to the left. If you need to interrupt the production of pure water and use your tap, simply turn tap off and the button will shut off allowing water through your normal faucet. .

In all cases it must be used where the black tubing carrying the rejected contaminants can be piped to a drain. The white inlet or source water tube must be connected to a pressurised and sterilised cold water supply.

While its usual function is the supply of premium quality drinking water, the high purity water produced by this unit will also be of great value for use in car batteries, radiators. steam irons. air coolers. ice making. printing, electronics, laboratory and pharmaceutical processes.

White tube connects to water supply

Blue tube – pure water

Black tube – waste water.



1. Take off aerator at kitchen faucet.
If female thread on faucet, use adaptor.
If no thread is available or the thread is not Standard, a collar is available which clamps around the end of the spout and provides a thread.
Please contact Purestream for details. Alternatively you may need to purchase an alternate spout from Bunnings.
 2. Connect inlet tube (white) to water supply by attaching diverter onto thread on faucet fitting.
 3. To produce pure water turn on water, turn silver handle to divert water into your counter top reverse osmosis. You can interrupt the production of pure water at any time by simply turning the water off and turning the silver handle back to its original position and you can use your faucet as normal.
 4. Soft blue tube provides you with pure water.
 5. Your diverter is designed not to interrupt your normal daily use from your cold water.
 6. Left hand side of membrane contains two outlets – top outlet produces pure water which is then polished for any tastes by the inline post filter.
Bottom outlet - black tubing produces waste water. – also contains ball valve for service mode. This water can be collected for garden use, or discharged down sink.
- Your reverse osmosis water filter is designed to produce 10 – 12 litres per hour. We recommend that you store your pure water in a food grade plastic container and store in the refrigerator. Your waste water from the black tube, can be used in your washing machine, garden use or other.

- Your purifier should be used at least twice each week to prevent dissolved solids and other contaminants from fouling the membrane.
- It is good practice to run your purifier for a few minutes each time you use it, prior to collecting purified water. This will flush any stale water from lines and post filter housing.
- Should you desire to check the performance specifications of your unit, it must always be run for at least 20 minutes prior to testing.
- **HOT WATER MUST NEVER BE RUN THROUGH THE PURIFIER. WATER OVER 35 DEGREES CELSUIS CAN PERMANTENTLY DAMAGE THE MEMBRANE**
- It is important that water storage containers be kept hygienically clean. Air-tight lids must be used whether containers be full or empty and containers should always be thoroughly cleaned before re-filling.
- Discard stored water after two to three days. Water stored for longer periods may develop a stale taste caused mainly by the absorption of airborne contaminants.

**** When unit is first installed, turn the blue handle on the service mode to horizontal (see below) . This will allow the water to rush through the membrane for 2 – 3 minutes to flush out preservatives.**

YOUR PURIFIER MUST BE SERVICED REGULARLY. **SERVICING OF UNIT.**

SERVICE BALL VALVE - Handle should be at right angles for production of pure water.



SERVICING OF UNIT. SERVICE BALL VALVE (16)

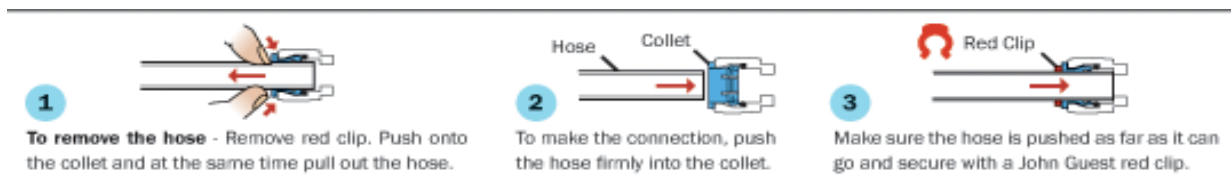
Your unit incorporates a specially designed ball valve designed to easily flush your membrane. This is achieved by directing all water flow, **full tap pressure**, into drain tube, by turning the blue handle on the ball valve in line with tubing.

This should be done twice a year to maintain maximum performance of membrane in removing contaminants. Run in service position for 3 minutes



REPLACE CARTRIDGES. – EVERY 12 MONTHS

Aeon offers a cartridge reminder service to do the remembering for you. Every 12 months we will send you a courtesy email with details of your model, cartridge code numbers and a link to the appropriate order page, to make it as easy as possible.



All cartridges in your system are inline and need to be replaced every 12 months

- 1. Remove red locking clip. To disconnect push sleeve in push fitting at end of each cartridge back on itself and pull tubing out. Throw old cartridges away.**
- 2. Install new inline cartridges as per diagram noting flow of water identified by arrow on cartridge.**
- 3 Your membrane needs replacing every 4 years. Disconnect the tube into the lid of the membrane housing and open right to left. The membrane has a rubber seal so you will need to twist the end to break the seal in order to remove. Thoroughly clean and wash out membrane housing. This can be done with normal household detergent, or sterilise with diluted Domestos. Rinse thoroughly. Replace membrane**

Purestream Water Filters

Manufactured for Aeon Consumerable Products,

P O Box 130 Southport B.C. 4215

Phone/Fax 07 55 914 394 LOCAL CALL

Email: kae@aeoncp.com.au

Website www.aeoncp.com.au

1300 888 429