

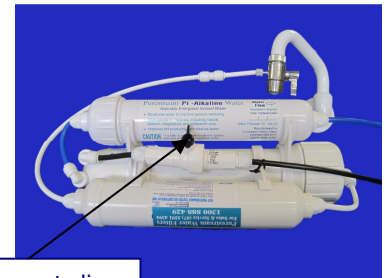


## FITTING AND OPERATING INSTRUCTIONS FOR PURESTREAM 3 STAGE REVERSE OSMOSIS SPACE SAVER WITH SERVICE MODE & ALKALINE POST FILTER

To ensure correct operation of your Reverse Osmosis unit, water supply must be within the following specifications

### **MODELS WITH PA (TFC) MEMBRANES**

<b>ph Range</b>	<b>4 – 11</b>
<b>Iron Level (Max.)</b>	<b>1.00 ppm</b>
<b>Total Dissolved Solids (max)</b>	<b>2000 ppm</b>
<b>Chlorine Level (Max)</b>	<b>2.0 ppm</b>
<b>Water Temperature (max)</b>	<b>40 degrees Celsius</b>
<b>** Water Pressure (Max)</b>	<b>100 psi</b>
<b>** Water Pressure (Min)</b>	<b>40 psi (400 kPa)</b>



Service Mode on waste line

While your Purestream Reverse Osmosis Purifier can be considered portable, it will normally be installed on your kitchen bench and attached to your faucet by means of a chrome diverter valve. To divert water to your unit, simply turn water on and turn the silver lever to the left. If you need to interrupt the production of pure water and use your tap, simply turn tap off and the button will shut off allowing water through your normal faucet. The inlet tube is also fitted with a joiner to allow you to disconnect the unit without removing the diverter for storage etc. The unit can also be attached to a wall in an upright position, brackets are available.

In all cases it must be used where the black tubing carrying the rejected contaminants can be directed to a drain or container to reuse the water for garden or washing use. The white inlet or source water tube must be connected to a pressurised and sterilised cold water supply.

**\*\*\* FIRST THING IN THE MORNING OR AFTER NON USE FOR A FEW HOURS. \*\*\***

In the first few weeks the first glass of water may appear milky and full of bubbles.

**THIS WATER IS FULL OF OXYGEN AND ALKALINITY .... DO NOT WASTE.**

This happens because the oxygen generated by the mineral rocks is contained in the cartridges until you turn on the tap. The concentration of oxygen is very high at this time and very beneficial.

### **ENERGISED – OXYGENATED WATER FOR MAXIMUM HEALTH BENEFITS.**

As reverse osmosis can be slightly acidic (6.5pH) your Purestream Space Saver Reverse Osmosis includes a Pi Alkaline filter as its final component to ensure you receive the health benefits of alkaline water with a 9 – 10pH. The Pi Alkaline cartridge also containing oxygenating ceramics which provide a **minus ORP**.

**(Oxidation Reduction Potential)**

### **IMPORTANT NOTE: RETAINING OXYGEN AND ALKALINITY**

Your energised water should be stored in airtight containers pending use. As with chlorine, oxygen and alkalinity will dissipate into the air if left exposed. To ensure consumer get the maximum benefits from your energised, oxygenated alkaline water, we recommend storing water in 1 – 2 litre containers, either plastic or glass, and ensuring water is to the top, allowing no air in the container. Once open we recommend consuming within 60 minutes. If left open longer, the alkalinity will drop to low 8's.

### **INSTRUCTIONS**

1. Take off aerator at kitchen faucet. If female thread on faucet, use adaptor.
2. Connect inlet tube (white) to water supply by attaching diverter onto thread on faucet fitting.
3. To produce pure water turn on water, turn silver handle to divert water into your space saver reverse osmosis. You can interrupt the production of pure water at any time by simply turning the water off and turning the silver handle back to its original position and you can use your faucet as normal.
4. Blue tube provides you with pure water.
5. Your diverter is designed not to interrupt your normal daily use from your cold water.
6. Left hand side of membrane contains two outlets – top outlet produces pure water which is then alkalined and polished for any tastes by the final inline filter.  
Bottom outlet - black tubing produces waste water. – also contains ball valve for service mode. This water can be collected for garden use, or discharged down sink.

- Your reverse osmosis water filter is designed to produce 8 – 10 litres per hour. We recommend that you store your pure water in a food grade plastic container and store in the refrigerator. Your waste water from the black tube, can be used in your washing machine, garden use or other.
- Your purifier should be used at least twice each week to prevent dissolved solids and other contaminants from fouling the membrane.
- It is good practice to run your purifier for a few minutes each time you use it, prior to collecting purified water. This will flush any stale water from lines and post filter housing.
- Should you desire to check the performance specifications of your unit, it must always be run for at least 20 minutes prior to testing.
- **HOT WATER MUST NEVER BE RUN THROUGH THE PURIFIER. WATER OVER 35 DEGREES CELSUIS CAN PERMANTENTLY DAMAGE THE MEMBRANE**
- It is important that water storage containers be kept hygienically clean. Air-tight lids must be used whether containers be full or empty and containers should always be thoroughly cleaned before re-filling.
- Discard stored water after two to three days. Water stored for longer periods may develop a stale taste caused mainly by the absorption of airborne contaminants.

### INITIAL SET UP

**\*\* When unit is first installed, turn the blue handle on the service mode To horizontal (see right) . This will allow the water to rush through the membrane for 1 -2 minutes to flush out preservatives.**



MAINTENANCE & SERVICING OF SPACE SAVER REVERSE OSMOSIS SERVICE BALL VALVE - Handle should be at right angles for production of pure water.



### SERVICING OF UNIT. SERVICE BALL VALVE

Your unit incorporates a specially designed ball valve designed to easily flush your membrane. This is achieved by directing all water flow, **full tap pressure**, into drain tube, by turning the black handle on the ball valve in line with tubing.

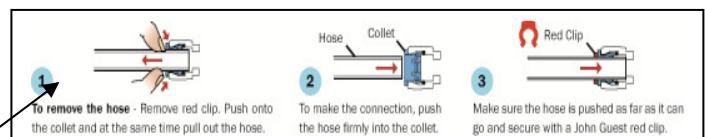


This should be done twice a year to maintain maximum performance of membrane in removing contaminants. Run in service position for 1 minute. We recommend that you hold onto the waste tubing at the time of servicing as water is rejected quite strongly.

### REPLACE CARTRIDGES—EVERY 12 MONTHS

**All cartridges in your system are inline and need to be replaced every 12 months**

1. To disconnect push sleeve in push fitting at end of each cartridge back on itself and pull tubing out. Throw old cartridges away.
2. Install new inline cartridges noting flow of water identified by arrow on cartridge.



### REPLACE MEMBRANE EVERY 4 YEARS.

**Your membrane needs replacing every 4 years. Disconnect the tube into the lid of the membrane housing and open right to left. The membrane has a rubber seal so you will need to twist the end to break the seal in order to remove. Thoroughly clean and wash out membrane housing. This can be done with normal household detergent, or sterilise with diluted Domestos. Rinse thoroughly. Replace membrane**

### Purestream Water Filters

Manufactured for Aeon Consumerable Products,

P O Box 130 Southport B.C. 4215

Phone/Fax 07 55 914 394 LOCAL CLL.... 1300 888 429

Email: [kae@purestreamwaterfilters.com.au](mailto:kae@purestreamwaterfilters.com.au)

Website [www.purestreamwaterfilters.com.au](http://www.purestreamwaterfilters.com.au)