



# INSTALLATION & SERVICE GUIDE

## 4 STAGE PORTABLE REVERSE OSMOSIS WITH SERVICE MODE

### APPLICABLE WHEN MINERALISER / PI ALKALINE FILTER REPLACES FINAL POLISHING FILTER.

To ensure correct operation of your Reverse Osmosis unit, water supply must be within the following specifications

While your Purestream Reverse Osmosis Purifier can be considered portable, it will normally be wall mounted in a laundry, kitchen or business premises. Ideally it should be hung on a wall over laundry tubs or clothes washer, but you can mount it anywhere else that suits you. It is not designed to be plumbed in.

In all cases it must be used where the black tubing carrying the rejected contaminants can be piped to a drain. The red inlet or source water tube must be connected to a pressurised and sterilised cold water supply. The purifier should have its own water supply or some form of cock or tap assembly, so that you may turn it on and off as required. A laundry tee-piece/cock assembly is supplied with your unit. This creates a cold water supply from your existing Cold Water laundry or dishwasher tap.

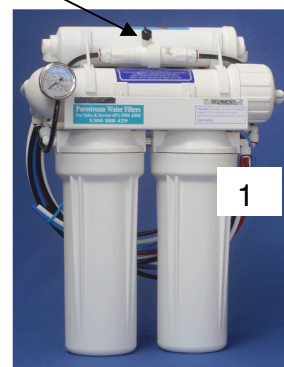
1. Take off washing machine tap
2. Install ½" M x ½" F bush with ¼" ball valve.
3. Connect washing machine tap to bush.
4. Connect white tube of RO system to ¼" ball valve making sure ball valve is closed.
5. Close lowest tap and turn on mains
6. Open ball valve..

**\*\* When unit is first installed, turn on the service mode for 1 – 2 minutes to fast track flushing of preservatives from membrane**

ALL TUBING HAS BEEN CONNECTED.

1. Connect inlet tube (red) to right side of right hand housing to water supply.
2. Left hand side of membrane contains two outlets – top outlet produces pure water which is then polished for any tastes by the inline post filter . Bottom outlet - black tubing produces waste water. – also contains ball valve for service mode. This water can be collected for garden use, or discharged down sink.
3. Soft blue tubing from inline post filter contains your pure water which should be stored
4. Your purifier should be used at least twice each week to prevent dissolved solids and other contaminants from fouling the membrane.
5. It is good practice to run your purifier for a few minutes each time you use it, prior to collecting purified water. This will flush any stale water from lines and post filter housing.
6. Should you desire to check the performance specifications of your unit, it must always be run for at least 5 minutes prior to testing.
7. HOT WATER MUST NEVER BE RUN THROUGH THE PURIFIER. WATER OVER 35 DEGREES CELSUIS CAN PERMANTENTLY DAMAGE THE MEMBRANE
8. It is important that water storage containers be kept hygienically clean. Air-tight lids must be used whether containers be full or empty and containers should always be thoroughly cleaned before re-filling.
9. Discard stored water after two to three days. Water stored for longer periods may develop a stale taste caused mainly by the absorption of airborne contaminants.

**3** Post Filter /  
Mineraliser / Pi Alkaline



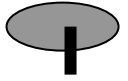
Water enters from the right, (1) passes through both housings – next - enters membrane housing exists with 2 tubes (2), pure and waste water. Pure water then passes through polishing inline cartridge.

**SERVICING OF UNIT. SERVICE BALL VALVE - located on the black line near the pressure gauge.**

Your unit incorporates a specially designed ball valve designed to easily flush your membrane. This is achieved by directing all water flow, **full tap pressure**, into drain tube, by turning the blue handle on the ball valve in line with tubing.



SERVICE BALL VALVE - Handle should be at right angles for production of pure water.



This should be done twice a year to maintain maximum performance of membrane in removing contaminants, especially after cartridge change. Run in service position for 2 – 4 minutes

Your Purestream Reverse Osmosis Water Filter represents the very best in design with all housings manufactured to Australian Standards

- STAGE 1 SEDIMENT PRE-FILTRATION** 1 micron pre filter to remove sediment particles, grit dust, mud, algae and protects the life of the membrane.
- STAGE 2 CHLORINE PRE FILTRATION** - a special high-grade carbon cartridge pre filter is added to protect the TRC Filmtec membrane from chlorine degradation.
- STAGE 3 ULTRAFINE FILMTEC TFC MEMBRANE**  
Screens out the most minute micro-particles. Pore size less than .0005 micron effectively repels heavy metals complexes including aluminium, lead, mercury etc. micro-organisms and colloidal matter.
- STAGE 4 CARBON POLISHING POST FILTER**  
Provides final polish resulting in superb tasting water.

**CARTRIDGE REPLACEMENT**

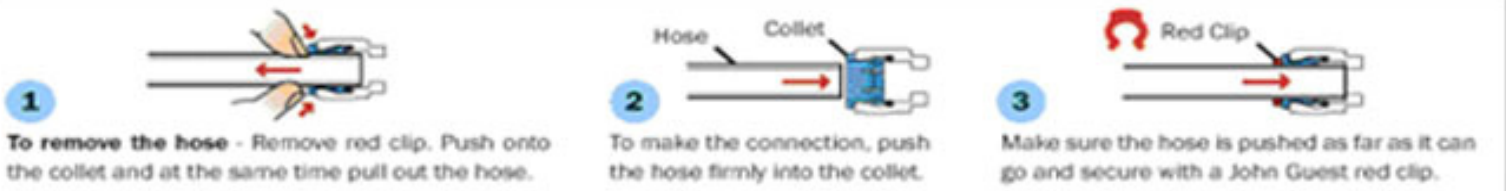
Sediment Pre filter	12 months
Carbon Pre filter	12 months
TRC RO Membrane	3 – 5 years
Carbon Post filter/Mineraliser / Pi Alkaline	12 months

**FITTINGS & TUBINGS**

Hose Quick Fit Connect fittings are used throughout the system. To ensure an optimal seal, tubing should be cut with the end square to provide efficient seal. Each fitting includes a red safety clip to lock connect fitting in place.

TO INSTALL, push fitting into Quit Fit Connector unit it bottoms (approx 5mm) Pull tube back 2mm and the collet will slide out with the tube, then push firmly a second time until tube stops.

TO DISCONNECT push collect back against connector, then slide tube out of fitting.



**Purestream Water Filters**  
**Manufactured for Aeon Consumerable Products,**  
**P O Box 130 Southport B.C. 4215**  
**Phone/Fax 07 55 914 394 1300 888 429**  
**Email: [kae@purestreamwaterfilters.com.au](mailto:kae@purestreamwaterfilters.com.au)**  
**Website [www.purestreamwaterfilters.com.au](http://www.purestreamwaterfilters.com.au)**  
**Copyright Purestream Water Filters 2010**