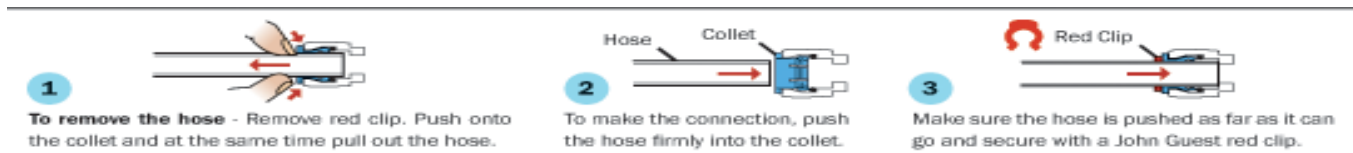


REPLACEMENT CARTRIDGE INSTRUCTIONS FOR INLINE FILTERS USED IN THE 4 STAGE COUNTERTOP RANGE, ALSO THE 4 STAGE COMPACT UNDERSINK MODEL.

Cartridges should be replaced every 12 months.

Purestream offers a cartridge reminder service to do the remembering for you. Every 12 months we will send you a courtesy email with details of your model, cartridge code numbers and a link to the appropriate order page, to make it as easy as possible.



All cartridges in your system are inline and incorporate the John Guest push fitting connector. To remove cartridges:

COUNTERTOP REVERSE OSMOSIS

1. Remove red locking clip. To disconnect push collet in push fitting at end of each cartridge back on itself and pull tubing out. You may need to put fingers on each side of the tubing to release. Throw old cartridges away.
2. Install new inline cartridges as per diagram noting flow of water identified by arrow on cartridge.



3. Now is the time to flush membrane using the flushing service mode. Turn the blue / black handle of the stop valve located in the black waste line for approx. 1 – 2 minutes. Water should only come out of the black tubing. We also recommend you hold on to the black tubing as water will come out with force.

UNDERSINK COMPACT REVERSE OSMOSIS.

Turn water source off at stop valve installed at copper pipe or flexible hose, Turn tank stop valve right angles to the line and open faucet to ensure all water is removed from tubing, other it will be difficult to remove tubing from cartridges.

Refer to steps 1 and 2 above.

Once you have changed the cartridges to the unit, with tank still turned off, water turn on at source (stop valve) open faucet on top of sink and allow the unit to produce water direct to the faucet. The water will now come out of the faucet at a fine stream, check pressure on gauge and ensure it should be showing 40psi or above. At this point you will flush the membrane using the Service Mode.

Turn the black or blue stop valve located on the black waste line to horizontal or in line with the black tubing for approx. 1 minute. Water will cease from the faucet, pressure will reduce to 0. The water is now being flushed down your waste. After 1 minute, turn the stop valve on the black line back to vertical or right angles to the black line, close the faucet and open stop on top of tank. The pressure gauge should continue to show pressure and your tank will now be filling.

4 Your membrane needs replacing every 4 years. This is located in the large canister with the pressure gauge. A small spanner will be supplied with your new membrane to assist with the opening of the top of the membrane housing. Disconnect the tube into the lid of the membrane housing and open right to left. The membrane has a rubber seal so you will need to twist the end to break the seal in order to remove. Thoroughly clean and wash out membrane housing. This can be done with normal household detergent, or sterilise with diluted Domestos. Rinse thoroughly. Replace membrane